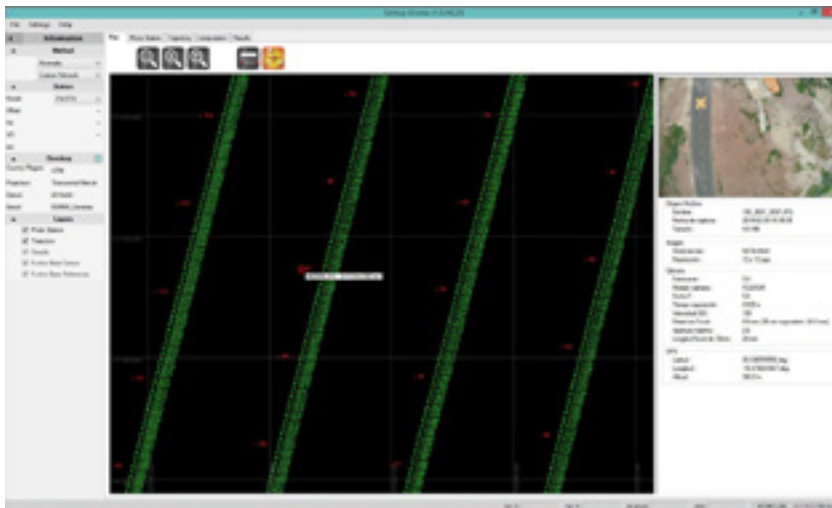
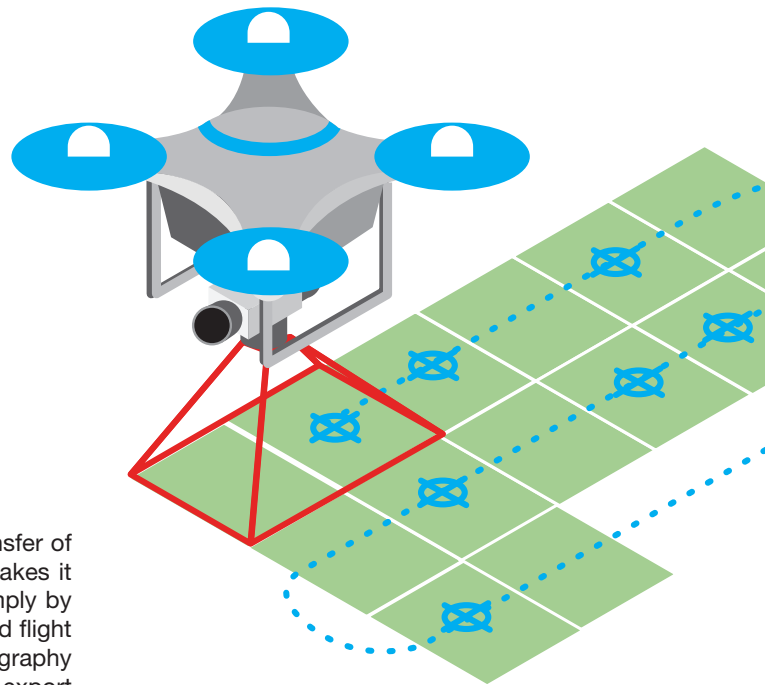


SETTOP Drone

Utility Software for UAV, post-processing, and geodesic calculations

Settop Drone is a type of utility software which allows the easy transfer of flight data from your drone to your photogrammetry software. It makes it very easy to move the whole flight to specific real co-ordinates simply by selecting from a database or to implement a geoid. You can also add flight displacements in three dimensions, modify the metadata of the photography (EXIF), or even post-process the flight or base trajectory. Its data export will modify the metadata of each photograph with the new co-ordinates calculated and an ASCII file ready to be imported into the photogrammetry software.



Visualization of the flight trajectory and information on the photography metadata

Main Advantages

- ✓ Easy to Use
- ✓ Geoid Application
- ✓ Selection of a system of co-ordinates
- ✓ Writing of the metadata of the photography (EXIF)
- ✓ Trajectory post-processing
- ✓ Post-processing of the reference base
- ✓ Application of displacements
- ✓ Exportation of the flight to ASCII and /or KML

Photo	Time	Altitude	Latitude	Longitude	Roll	Pitch	Yaw	Heading	Speed	Altitude	Latitude	Longitude	Roll	Pitch	Yaw	Heading	Speed
001	12:00:00	100	41.888889	2.125000	0	0	0	0	0	100	41.888889	2.125000	0	0	0	0	0
002	12:00:01	100	41.888889	2.125000	0	0	0	0	0	100	41.888889	2.125000	0	0	0	0	0
003	12:00:02	100	41.888889	2.125000	0	0	0	0	0	100	41.888889	2.125000	0	0	0	0	0

List of the re-calculated co-ordinates, exportation to CSV