

PRECISION ECHOSOUNDER USB CONNECTION ECHOLOGGER EU400

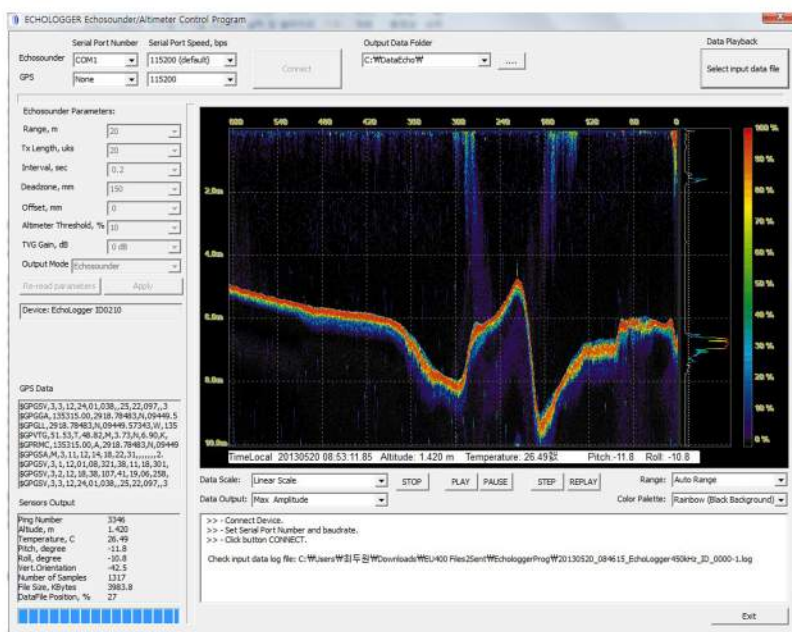
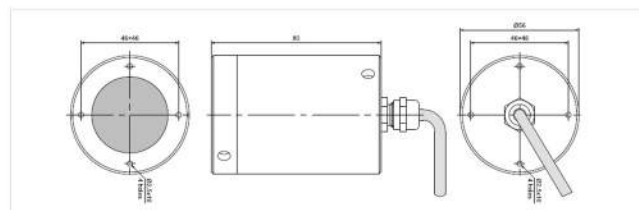


FEATURES

- Plug and Play with a laptop PC via USB port
- No additional power supply is required
- Real-time backscatter data collection along full water columns
- Compatible with Hypack, Topcon receiver, HydroPro(Trimble)
- User friendly GUI software provided for instant image update
- Tilt sensor integrated (option)

APPLICATIONS

- Sea bed mapping
- Sediment Move Monitoring
- Bridge Scour Monitoring



SPECIFICATION

Acoustic Frequency	450 KHz
Beam width	5° Conical (-3dB)
Transmit Pulse Width	10µsec ~ 200µsec (10µsec step)
Ranges	0.15 m ~ 100 m
Housing	Acetal
Connector	USB
Operating Depth	5 m (Cable length dependant)
Repetition (Ping) Rate	10 Hz max
Sampling Rate	100 kHz
Water Column Resolution	>7.5 mm
Altimeter Range Resolution T	<1.0 mm
emperature Resolution	0.1°C
Temperature Accuracy	0.5°C (-10°C ~ +50°C)
Tilt sensor integrated (optional)	
Dual-axis, horizontal operation	±90°
Inclination data accuracy	0.1
Digital Output Interface	USB
Communication Speed	4800 ~ 115200 baud (115200 baud default)
Data Output Format	ASCII TXT, NMEA0183, or user defined (optional)
Configuration and Data reading	Echologger Control Program Or any terminal program
Operation Temperature	-10°C ~ +50°C
Power supply	USB powered, 2W max
Dimensions	D56 mm x L80 mm (without connector)
Weight	420g
Other features	Hypack Compatible (NMEA) GPS integrated data
